

JAPAN 2023 INTERNSHIP PROGRAM



Information from the Government of Japan



Don't miss this great opportunity to build your future career.

This internship program aims to give candidates with higher skills and knowledge an opportunity to experience of working with Japanese company. Through the program, you would be able to touch not only Japanese companies' business strategies but also their corporate culture, Japanese people's way of thinking and their values.



*Calculated based on the total number of host companies and interns who answered "very satisfied" or "satisfied" in 2023 internship program survey.

Details/Entry Please visit our website for inquiries.

METI Japan Internship Program

Search

<https://internshipprogram.go.jp/>

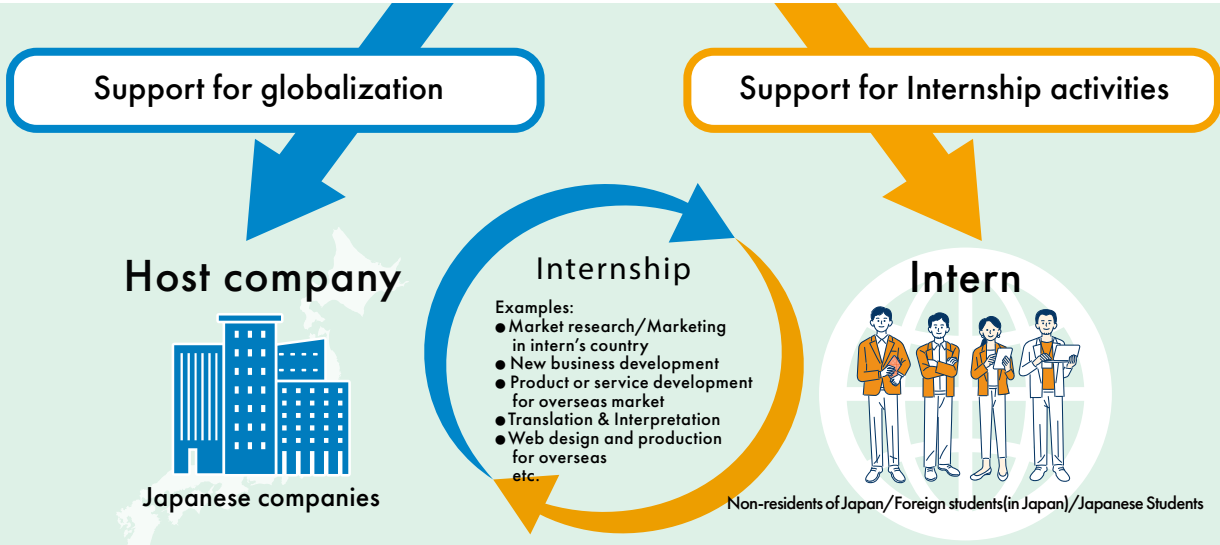


Japan Internship Program Office



The program office is responsible for:

- The process of registration and selection of candidates
- Matching between host companies and suitable candidates
- Conducting lectures and trainings for cross-cultural communication
- Supporting both host companies and interns during the internship



Apr. | May. | Jun. | Jul. | Aug. | Sept. | Oct. | Nov. | Dec. | Jan. | Feb.

Recruitment	Course	Entry	Selection Matching	Internship
1st recruitment	A course Foreign students /Face-to-face	15/May.~3/Jul.		1/Aug. ~ 29/Sept. 40 Active days
	B course Non-residents of Japan /Online	15/May.~3/Jul.		18/Aug. ~ 29/Sept. Up to 120 hours
	C course Non-residents of Japan /Face-to-face	15/May.~3/Jul.		17/Oct. ~ 15/Dec. 40 Active days
2nd recruitment	A2 course Foreign students /Face-to-face		Late August	10/Oct. ~ 8/Dec. 40 Active days
	B2 course Non-residents of Japan /Online		Late August	2/Nov. ~ 15/Dec. Up to 120 hours

- 3 courses available**
- A/A2 course** This is a face-to-face internship program open to international students studying in Japan.
 - B/B2 Course** This is an online internship program that can be joined from abroad. Interns can work remotely from their home country to carry out the internship plan of the host company.
 - C Course** This is a face-to-face internship program that allows participants to engage in activities while residing in Japan.

*Eligibility: Foreign human resources with advanced skills who are nationals of developing countries (countries on the OECD/DAC list)(excluding People's Republic of China) / A student with Japanese nationality enrolled in a university or graduate school in Japan.

Details/Entry Please visit our website for inquiries.

METI Japan Internship Program

Search

<https://internshipprogram.go.jp/>

